

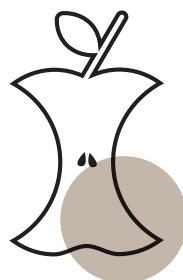
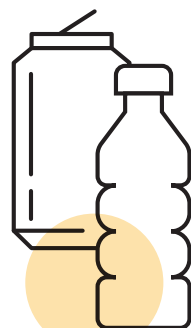


Comune di Pordenone



DOOR-TO-DOOR COLLECTION AND CORRESPONDING RATE.

An effective system,
a fair and reasonable rate.



NORTH | SOUTH AREA



DOOR-TO-DOOR COLLECTION AND CORRESPONDING RATE.

Waste management represents one of the most important challenges in environmental protection, sustainable development and health protection.

Pordenone Community and its partner GEA are committed to constantly improving environmental standards to ensure a safe present and a sustainable future for citizens. This path has led to the current integrated door-to-door collection system, characterized by efficient waste methods of disposal and the rationalization of collection frequencies.

In addition, the technologies adopted made possible to implement consistent and fair service taxation criteria, based to the application denominated RFID (Radio Frequency Identification) TAG, inserted in the gray container for non-recyclable dry waste that will associate each user with its container.

The corresponding rate (Law No. 147/2013 Art. 1, paragraph 668), will be applied starting on 1 January 2023, and it will be aimed at attributing to the users a proportional amount to the service used, being calculated according to the number of non-recyclable dry waste container empties collected door to door.

The personalized magnetic card will be distributed to each user in order to allow the organic waste and glass disposal in the respective public street containers.



FOR INFORMATION

Monday through Friday 9 a.m. to 1 p.m.
Monday and Thursday 2-5 p.m.

- Toll-free number 800501077
- Commercial phone: 0434 504711
- Email: sportellopn@gea-pn.it
- Web address: www.gea-pn.it

A CONVENIENT TRASH KIT:



- **Easy Trolley** is an innovative ergonomic trash container that is practical, lightweight and easy to carry.
- **Yellow clear bags** are to be used for plastic and aluminum/food packaging disposal.
- **Customized magnetic card** is in use to open the organic waste and glass public street trash containers. The magnetic card will also be distributed for the diapers disposal, but only on the specific request and upon the submission of the application (see page 16).

Municipal waste collection TRASH KIT will be provided to users by GEA and its use is mandatory.

AN EFFECENCY SYSTEM

PAPER AND CARDBOARD



Must be placed inside the Easy Trolley, gray container with blue lid.

Weekly door-to-door collection.

PLASTIC/ ALUMINUM – FOOD CANS – PACKAGING



Must be placed inside the yellow clear trash bags. **Door-to-door** collection will be performed **every two weeks**.

DRY WASTE



Must be placed inside the gray container with radio frequency identification—RFID TAG.

Door-to-door collection is scheduled **every two weeks**.

ORGANIC WASTE



Must be placed (use biodegradable bags only) inside the **public street** trash container that can be opened with the magnetic card only.



VETRO



Must be placed inside the **public street** trash container that can be opened with the magnetic card only.



GARDEN WASTE AND CLIPPINGS



- **Door-to-door collection** will be performed only if the user have a dedicated container and upon request by the user.
- **Home pickup** by appointment and only for large quantities.
- If the user has not requested the above services, garden waste and clippings must be disposed of to the **municipal ecological platform** (free of charge).



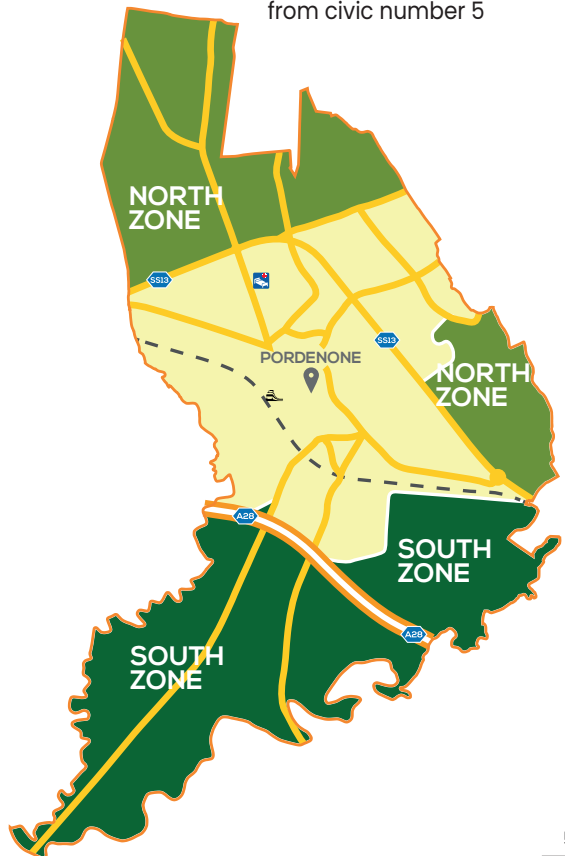
DOOR-TO-DOOR COLLECTION AREAS

NORTH AREA

- Via Barcis
- Via Bassa del Cuc
- Via Bellasio
- Via Brentella
- Via Budoia
- Via Campagna
- Via Castelfranco Veneto
- Via Claut
- Via Conegliano
- Via Consorziale
- Via Dardago
- Via della Tesa
- Via delle Acque
(east of Viale Aquileia)
- Via delle Villotte
- Via Eritrea
- Via Erto e Casso
- Via Falcade
- Via Fornace
- Via G. Ferraris
(from civic number 18C
and from civic number 35)
Via Libia
- Via Maestra Vecchia
(odd-numbered houses only)
- Via Misurina
- Via Montereale
(from civic number 34
and from civic number 83)
- Via Musile
- Via Paradiso
- Via Parcheggio Electrolux
- Via Pionieri del Volo
- Via Polcenigo
- Via Portolana
- Via Prà
- Via Pralongo
- Via Pranovo
- Via Prasecco
(east of Viale Aquileia)
- Via Praverde
- Via Pravalton
(east of Viale Aquileia)
- Via Roveredo
- Via San Daniele
- Via Somalia
- Via Spin
- Via Tiro a Segno
- Via Vajont
- Via Vigonovo
- Via Vittorio Veneto
(south of fiume Noncello)
From civic number 31 and
from civic number 28
- Vial Turco
- Viale Aquileia (east side from the river
Noncello up to the municipal borders)
Odd-numbered houses)
- Viale d'Aviano
- Viale de la Comina
- Viale Grande
(from civic number 28 and
from civic number 23)
- Viale Montereale
- Viale Venezia (odd-numbered houses
up to civic number 103, intersection with
Via Maestra Vecchia)

SOUTH AREA

- Frazione Villanova
- Piazza Valle
- Via A. Fossati
- Via A. Ristori
- Via A. Zanette
- Via A. Malignani
- Via Bar de Le Foie
- Via Brugnera
- Via Chiesa di Vallenoncello
- Via Comugne
- Via del Bosco
- Via del Cuch
- Via del Passo
- Via della Boschetta
- Via della Mula
- Via della Selva
- Via delle Crede
- Via delle Spezzadure
- Via Dogana
(from the intersction with Viale Treviso)
- Via Don Carlo Fabris
- Via Erasmo da Valvasone
- Via G. di Vittorio
- Via G. Santorini
- Via Griet
- Via Interporto Centro Ingrosso
- Via J. Linussio
- Via J. Stellini
- Via J. Tomadini
- Via L. Savio
- Via L. Zanussi
- Via Levade
- Via Montebelluna
- Via Nuova di Corva
(south of the highway overpass)
From the civic number 60
and From the civic number 99
- Via Orefici Michelin
- Via Orti Pezzotti
- Via P. Bassani
- Via P. Zorutti
- Via Pont de Le Cassie
- Via Pramarat
- Via Prata
- Via S. Gatti
- Via S. Leonardo
- Via San Gregorio Bassa
- Via Segaluzza
- Via V. Cadel
- Via V. A. Cargnel
- Via Valle
- Via Vallenoncello
- Via Villanova (south of the intersection with Via Del Bosco)
- Via Villanova di Sotto
- Viale Treviso (south of the highway overpass) from civic number 2 and from civic number 5





PAPER AND CARDBOARD



WHAT TO DISPOSE OF

Newspapers and magazines, books, papers, notebooks, cardboard and clean cardboard/boxes packaging without plastic parts (boxes for rice, pasta, eggs, detergents...), Tetra Pak®-beverage containers (for milk, wine...), clean pizza boxes, paper bags (for bread, shoppers...), cardboard tubes (from rolls of kitchen paper and toilet paper).



WHAT NOT TO DISPOSE OF

Greaseproof paper (used to pack cold cuts, cheese...), sticky or plastic-coated paper, baking paper, greasy or dirty paper, carbon paper, sandpaper and wallpaper, nylon, cellophane, grocery receipts, clean Scottex®-kitchen paper.



Door-to-door collection.

WASTE MUST BE NOT
ABANDONED OUT OF
THE CONTAINERS



FOR A WASTE COLLECTION QUALITY

Reduce the volume of waste. Do not introduce dirty paper. Remove food and drink residues. Place out your trash container only when it is full. Do not use plastic bags. Large and bulky packages must be brought to the Municipal waste collection center or at the Mobile Eco-center (see page 18). Write your name on the container so you do not confuse it with your neighbor's container.



PLACE THE CONTAINER OUT OF YOUR RESIDENCE

on a public street and in a visible place, **after 07:30 p.m. the evening before the scheduled day of collection.**

Trash container must be back inside your property after emptying and as soon as possible, but no later than the end of the day.



PLASTIC AND ALUMINUM/FOOD CANS PACKAGING



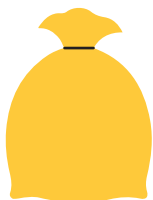
WHAT TO DISPOSE OF

Bottles, plastic packaging (for pasta and rice...), handbags, trays, plastic or aluminum food containers, flacons and non-plastic spray dispensers, disposable plastic plates and cups, medicine blisters, poly-bagged packaging (packaging for coffee, frozen foods, snacks...), Styrofoam packaging, coat hangers.



WHAT NOT TO DISPOSE OF

Ceramics and porcelain, mirrors, light bulbs, toothbrushes, containers with food and liquids residual, plastic objects or toys, rubber, pens, eyeglasses, CDs and their cases, soiled ground cloths, disposable plastic cutlery, electrical cables, irrigation hoses, packing chips, masks (must be disposed of in non-recyclable dry waste container).



Door-to-door collection.



FOR A WASTE COLLECTION QUALITY

Reduce the volume of waste. Remove food, drink and detergent residue. Place out your trash yellow bag only when it is full. Bulky plastic items (e.g., tables, chairs, plastic fruit and vegetable boxes...) must be brought/diposed of at the waste collection center.



PLACE THE YELLOW BAG (OR MORE THAN ONE BAG) OUT OF YOUR RESIDENCE

on a public street/roads of the residence's territory and in a visible place, **after 7:30 p.m. the evening before the scheduled day of collection.**

GEA will provide users that reside in the territory of Pordenone with the annual refuse calendar and with an annual supply of bags (2 rolls of 30 pieces each). In case of running out of bags, user will be able to use similar clear bags that are available in any Italian supermarket or stores as: "COOP-CONAD-TULIPANO" and ect..



ORGANIC WASTE



WHAT TO DISPOSE OF

kitchen waste and food scraps, spoiled or expired food (without packaging), shells of dried fruit and oleaginous fruits, eggs and shellfishes, fruit and vegetable scraps, coffee grounds, tea and herbal tea filters, old bread, flowers and cut twigs, small plants without soil, paper towels soiled with food, dull ashes, small bones, fish bones, dirty and greasy pizza boxes, vegetable litter of small pets, small quantities of pet excrement, kitchen paper.



WHAT NOT TO DISPOSE OF

Glass, aluminum, plastic and paper, diapers, toxic waste and/or harmful.



The public street containers must be open with a magnetic card.

WASTE MUST BE NOT ABANDONED OUT OF THE CONTAINERS



FOR A WASTE COLLECTION QUALITY

FOR A WASTE COLLECTION QUALITY: use biodegradable and compostable bags Only, certified as per UNI EN 13432:2002.



If you have a garden you **can create a domestic compost.** (see page 12)



GLASS



WHAT TO DISPOSE OF

Glass containers, bottles, jars, small demijohns without plastic (unbroken and empty).



The public street containers must be open with a magnetic card.



WHAT NOT TO DISPOSE OF

All types of light bulbs, mirrors, various types of glass (objects or glass plates) even if in pieces, ceiling lights, ceramic or porcelain, aluminum or steel caps, glass or crystal glasses, neon lights, double glazing and big demijohns.

WASTE MUST BE NOT ABANDONED OUT OF THE CONTAINERS



FOR A WASTE COLLECTION QUALITY

Remove food and drink residues. Waste must be disposed loose, do not use plastic bags. Bulky glass objects (large demijohns) must be disposed of to the Waste Collection Center.



NON-RECYCLABLE DRY WASTE



WHAT TO DISPOSE OF

Earthenware jars, cotton buds, greaseproof paper, carbon paper, receipts, nylon stockings, disposable razor blades, toothpaste tubes, cosmetics, cotton, nappies, diapers, sanitary napkins, traditional and halogen bulbs, vacuum-cleaner powders, objects in plastic, rags, syringes with caps, synthetic litter, pens, duct tape, plasters, cigarette butts, disposable plastic cutlery, masks.



WHAT NOT TO DISPOSE OF

Recyclable waste, building materials, batteries, batteries, medicines, toner and cartridges for printers, beverage containers, tetrapak type, food trays, disposable plates and glasses, hazardous waste, metal objects, small appliances, (cell phones, battery chargers...) polystyrene. This container is equipped with a RFID-TAG.



Door-to-door collection. Container equipped with radio frequency identification-RFID TAG.

WASTE MUST BE NOT ABANDONED OUT OF THE CONTAINERS



FOR A WASTE COLLECTION QUALITY

Place out of your residence the trash container **ONLY** when it is full and with the lid **CLOSED**. **DO NOT** deposit/abandon additional bags outside the container. Do not dispose of waste in bulk, use several plastic bags and not a single large bag. Bulky items must be disposed of/brought to the Waste Collection Center. Write your name on the container so as you not confuse it with your neighbor's container.



PLACE THE CONTAINER OUT OF YOUR RESIDENCE

on a public street and in a visible place, **after 07:30 p.m. the evening before the scheduled day of collection.**

Trash container must be back inside your property after emptying and as soon as possible, but no later than the end of the day.



GARDEN WASTE



WHAT TO DISPOSE OF

Grass and branches leaves, grass clippings and cut flowers, twigs, pruning of trees and hedges, landless domestic plants, vegetable residues from the vegetable garden, light wooden boxes



WHAT NOT TO DISPOSE OF

Vases made of earthenware, plastic or glass, wire and metal ties, hazardous substances or other impurities, cellophane and handbags, stones, soil, vegetable waste from professional floriculture, organic wet, logs and palm trees.



Small and medium quantities

Request for dedicated container and door-to-door collection only on fee service.



Large quantities

At cost home pickup, by appointment and only for large quantities.



Free of charge disposal

Only at the collection center (see page 17)



SERVICE ACTIVATION

For activation and to request the door-to-door collection service or booking of garden waste home pickup please call or email during the following days and hours to: Monday thru Friday from 0900 to 1300 hours, Monday and Thursday from 1400 to 1700 hrs

- toll free number: 800501077 - telephone 0434 504711
- sportellopn@gea-pn.it
- download the activation from GEA site www.gea-pn.it
- only for American send an email to giovanna.coppola.it@us.af.mil



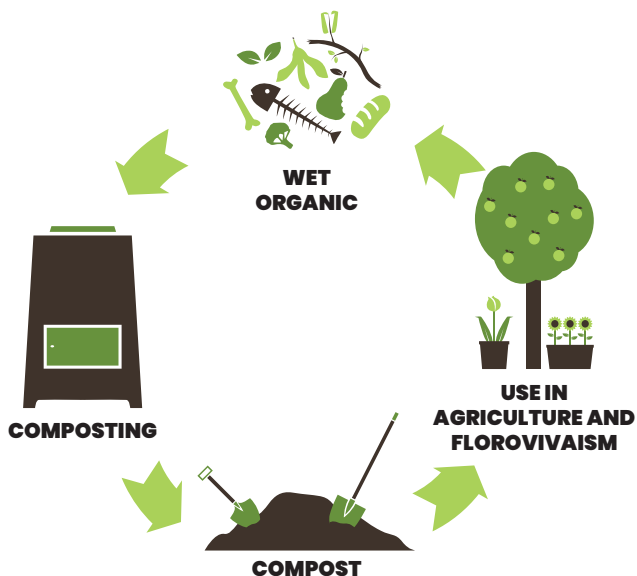
PLACE THE CONTAINER OUT OF YOUR RESIDENCE

on a public street and in a visible place, **after 07:30 p.m. the evening before the scheduled day of collection.**

Trash container must be back inside your property after emptying and as soon as possible, but no later than the end of the day.



HOME COMPOSTING



Home composting is a natural process; if done correctly, it allows to obtain good soil from organic kitchen and garden waste (food scraps, fruit and vegetable remains, leaves and twigs, etc.)

WHAT CAN BE USED?

Wet

- cut grass
- food scraps
- spoiled food
- fruit and vegetable scraps
- coffee grounds and tea bags



Dry

- twigs
- straw, dry leaves
- cardboard
- chip



NOTICE: the user who benefits from the TARI reduction cannot dispose of the organic waste in street trash containers.



REQUEST THE TARI-WASTE BILL- REDUCTION



If you perform home-composting: frame the QR code with your smartphone and visualize how you can get a reduction on your waste bill.

Or visit the site: www.gea-pn.it



BULKY ITEMS/LARGE DURABLE GOODS



WHAT IS CONSIDERED BULKY

Mattresses and bed bases, furniture, armchairs and sofas, furnishings in general, refrigerators and freezers, televisions, computers, tires, washing machines and dishwashers, air conditioners, toys and large hard plastic objects.



WHAT IS NOT CONSIDERED BULKY

Rubble from home renovations, stones, earth, bins and containers of toxic products.



Free of charge disposal, bringing the bulky items at the municipal waste collection center (see page 17)



Reservation for home bulky items pickup will be made for a fee of charge only.



TO REQUEST AT COST HOME PICK UP SERVICE

A call must be placed from Monday thru Friday from 0900 to 1300 hours, Monday and Thursday from 1400 to 1700 hrs

- toll free number 800501077
- telephone 0434 504711
- sportellopn@gea-pn.it
- for American only: giovanna.coppola.it@us.af.mil.

Email should contain:

1. tenant's first and last name and the full address of where they live;
2. the first and last name of the landlord/landlady and the telephone number/contact information;
3. detailed list of the bulky items for which the service is requested.
4. based on the list, GEA will calculate the amount to be paid for the requested service.



USED VEGETABLE OIL



WHAT TO DISPOSE OF

Used Vegetable oils (olive oil, various seeds, sunflower oil, margarine...) animal fats (ugly, lard, lard) that remain from frying and cooking.



WHAT NOT TO DISPOSE OF

Mineral lubricating oils for engines



ricicl-ami (recycle me)

Dispose of the used vegetable oils at the oil collection points located in the municipality territory, and also at the municipal waste collection center (see page 17) and the mobile eco-center (see page 18)

WASTE MUST BE NOT
ABANDONED OUT OF
THE CONTAINERS



COLLECTION POINTS



Frame the QR Code on your smart phone to visualize the **map of the collection points.**

Or visit the site **www.gea-pn.it**



BATTERIES (AAA AND SIMILAR)

WASTE MUST BE NOT
ABANDONED OUT OF
THE CONTAINERS



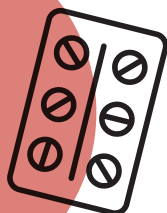
Place them in the appropriate tube
containers located at retailers, at the
municipal collection center (see page 17)
or the mobile eco-center (see page 18).



COLLECTION POINTS

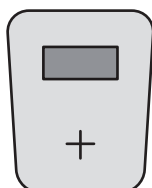


Frame the QR Code on your smart phone to visualize the
map of the collection points.
Or visit the site www.gea-pn.it



MEDICINES

WASTE MUST BE NOT
ABANDONED OUT OF
THE CONTAINERS



Place them in the appropriate containers
placed outside each pharmacy or bring
them to the municipal waste collection
center (see page 17) or to the mobile
eco-center (see page 18).



COLLECTION POINTS



Frame the QR Code on your smart phone to visualize the
map of the collection points.
Or visit the site www.gea-pn.it



CHILDREN DIAPERS AND ADULT DIAPERS

Families with babies and aged people can have a dedicated child diapers and/or adult diapers service only upon submission of a specific request.

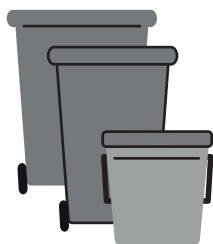


CHILD DIAPERS

The service can be activated for up to the third year of the child's life.

Dedicated -home- container.

Door-to-door collection on the same day of non-recyclable dry waste collection.



ADULT DIAPERS

Dedicated home containers of various volumes.

Door-to-door collection on the same day of non-recyclable dry waste collection.



Alternatively, dispose of diapers in the public street trash containers that can be opened only with a magnetic card.

In the public street trash containers must Dispose of **Child and Adult Diapers Only**: in case of improper disposals identified upon verification, the emptying will be charged on the waste bill of who have disposed of waste improperly.

To activate the service request:
Monday to Friday
from 0900 a.m. to 1300 p.m,
Monday and Thursday
from 1400 to 1700 p.m.

- toll-free number 800501077
- telephone 0434 504711
- sportellopn@gea-pn.it
- for American only:

giovanna.coppola.it@us.af.mil



COLLECTION POINTS



Frame the QR code on your smartphone:

- visualize the map of the collection points
- download the request form for home containers dedicated for child diapers and adult diapers.

Or visit the site **www.gea-pn.it**



MUNICIPAL WASTE COLLECTION CENTER



WHAT CAN BE DISPOSED OF

Bulky waste (mattresses, armchairs, seats, tables, cabinets...) electrical and electronic household appliances (neon tubes, fluorescent lamps, appliances, televisions, monitors, keyboards, mice, computers, mobile phones...) glass plates, inert waste (shards of broken vases, stones, tiles, tiles and rubble in small quantities, from minor home repairs), hazardous waste in the original containers (lacquer, paints, solvents...) mineral oils for engines and used edible oils, iron, wood, plastics, tires, car accumulator and exhausted batteries, dangerous chemical products coming from domestic activities in the original containers (chemical fertilizers, insect poison, fungicides...) clippings and twigs, wooden boxes.



Free of charge disposal, in proper dumpsters at the municipal waste collection center.

The access to the Waste Collection Center is restricted to users residing in Pordenone Municipality/territory including districts/suburbs; to have access, users, needs to have the **magnetic health card** or **tax code (Codice Fiscale)** with you.

American residing in Pordenone are required to have a swipe card/badge that will be provided by GEA.



ADDRESS AND HOURS OF SERVICE

Via Nuova di Corva n. 86 - Pordenone

- Monday, Wednesday, Friday 0800-1200
- Tuesday and Thursday 0800-1200 and 1400
- Saturday 0800-1200 and 1300-1800



MOBILE ECO-CENTER

The service is dedicated only to **users of the municipality of Pordenone**, subject to identification by the operator.

TYPE OF SERVICE



MOBILE ECO-CENTER FOR DANGEROUS GOODS

Only for **domestic use**

WHAT CAN BE DISPOSED OF:

Medicine, paints, neon, pesticides, mineral oil etc.



MOBILE ECO-CENTER FOR RECYCABLE GOODS

For **all users**

WHAT CAN BE DISPOSED:

Paper, cardboard, plastic packaging, wooden boxes.

HOW DOES IT WORK

- bring your **health card** or **tax code**, or swipe card/badge with you
- **bulky waste** cannot be delivered,
- on midweek **holidays** the service **is not carried out**,
- unidentifiable waste **will not be collected**,
- each user can dispose of waste **only once a day**,
- users of the Municipality of Pordenone can dispose of waste at **any stopping point**, even outside your own residential district/neighborhood.



COLLECTION POINTS



Frame the QR Code on your smartphone:

- here and when the Mobile Eco Center is active
- types of waste and the maximum quantities that can be disposed of

Or visit the site: www.gea-pn.it



GEA – Gestioni Ecologiche e Ambientali S.p.A.
Via L. Savio 22 – 33170 – Pordenone

- www.gea-pn.it
- sportello@gea-pn.it

Monday to Friday from 0900 a.m. to 1300 p.m,
Monday and Thursday from 1400 to 1700 p.m.

- telephone 0434 504711
- toll-free number 800501077



Download the App
Turn on Notifications
Place out your waste

MyGEA App

MyGEA: use GEA's free App that helps you to manage well your waste!

Download it from the stores for easy access from your smartphone or tablet in reading and being updated on the refuse calendars, useful addresses, maps, waste glossary, in short: to all the useful information about waste collection in the area where you live.



Frame the QR Code on your smartphone and watch in the video how easy and convenient is to use MyGEA!
Or visit the site: www.gea-pn.it